

Pei Chun Public School  
Holistic Assessment 2 – 2017  
Mathematics  
Primary 3

Do not write  
in this space

Name: \_\_\_\_\_ (     )

Class : Primary 3 \_\_\_\_\_

Date : 15 August 2017

Time : 40 min

Maths Teacher : \_\_\_\_\_

Parent's Signature: \_\_\_\_\_

Section A	20
Section B	10
TOTAL	30

**Section A**

Questions 1 to 8 carry 1 mark each. Write your answers in the spaces provided. For questions which require units, give your answers in the units stated.

(8 marks )

1. What fraction of the figure is shaded?



Answer : \_\_\_\_\_

2. Express 8 m 90 cm in centimetres.

Answer : \_\_\_\_\_ cm

SCORE

3. Express  $\frac{9}{12}$  in its simplest form.

Do not write  
in this space

Answer : \_\_\_\_\_

4. Find the value of  $\frac{3}{8} + \frac{1}{4}$ .

Answer : \_\_\_\_\_

5. Find the value of  $\frac{7}{9} - \frac{1}{3}$ .

Answer : \_\_\_\_\_

6. Express 4058 ml in litres and millilitres.

Answer : \_\_\_\_\_ l \_\_\_\_\_ ml

SCORE

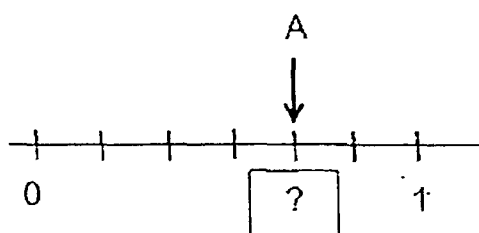
7. What is the missing number in the box?

Do not write  
in this space

$$\frac{2}{5} = \frac{4}{\boxed{?}}$$

Answer : \_\_\_\_\_

8. What is the fraction represented by the letter A?

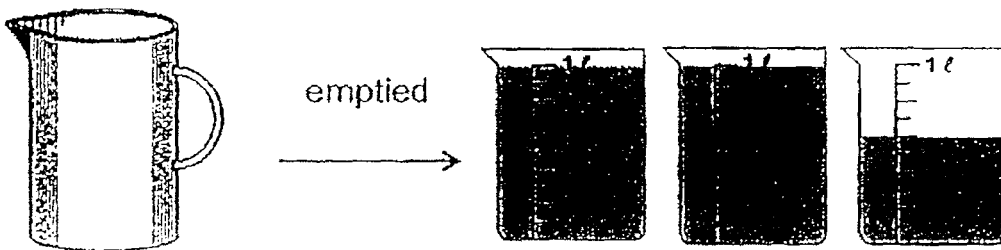


Answer : \_\_\_\_\_

Questions 9 to 14 carry 2 marks each. Show your working clearly in the space below each question and write your answers in the spaces provided. For questions which require units, give your answers in the units stated. (12 marks)

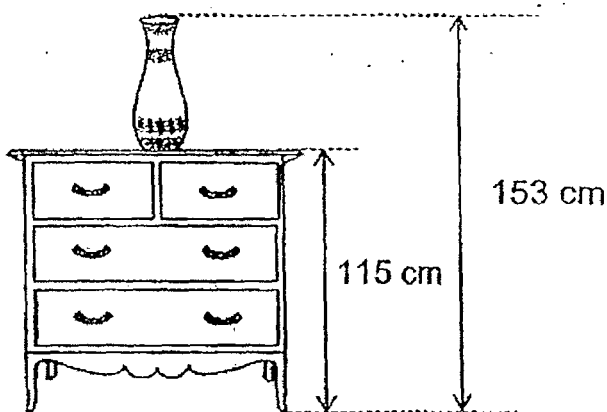
Do not write  
in this space

9. John emptied a container filled completely with water into 3 beakers as shown below. What is the capacity of the container? Give your answer in ml.



Answer : \_\_\_\_\_ ml

10. Study the diagram below.  
What is the height of the vase?



Answer : \_\_\_\_\_ cm

SCORE

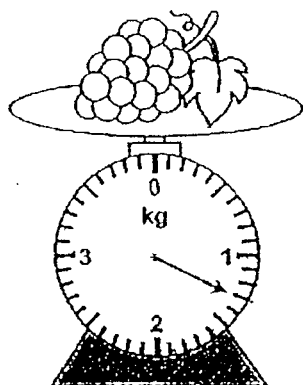
11. Arrange the set of fractions below in order. Begin with the greatest.

Do not write  
in this space

$$\frac{5}{12}, \frac{5}{11}, \frac{3}{12}$$

Answer : \_\_\_\_\_ , \_\_\_\_\_ , \_\_\_\_\_  
greatest

12. Study the diagram below.



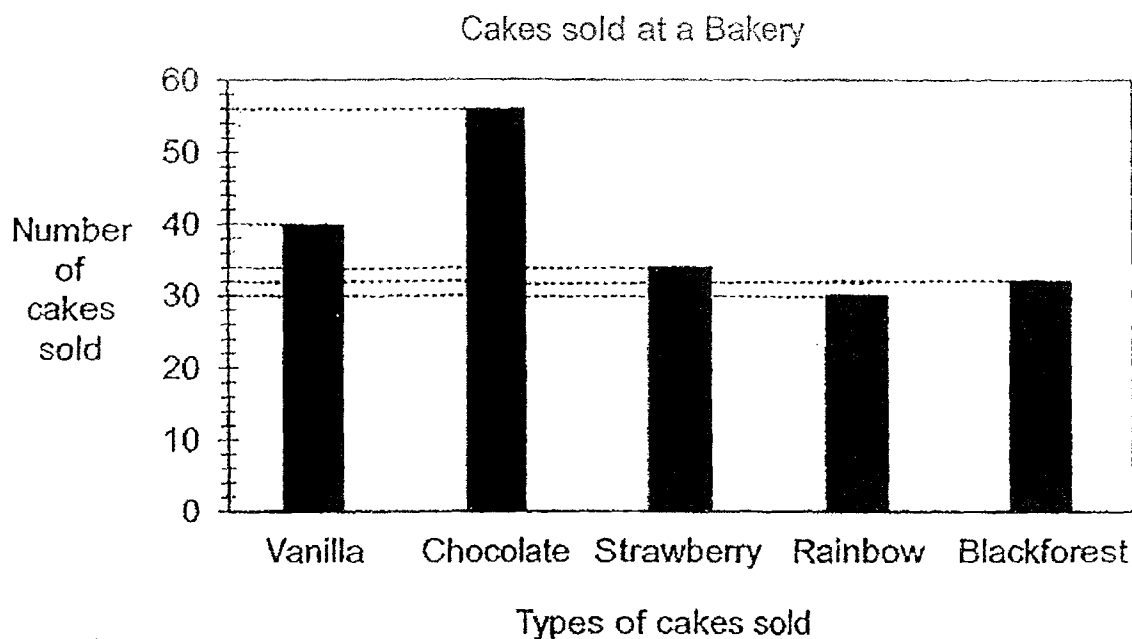
What mass of grapes must be added to make 3 kg?

Answer : \_\_\_\_\_ kg \_\_\_\_\_ g

SCORE

13. The bar graph below shows the number of the different types of cakes sold at a bakery in a week.

Do not write  
in this space



Each statement is either true or false from the information given. For each statement, put a tick (✓) in the correct column.

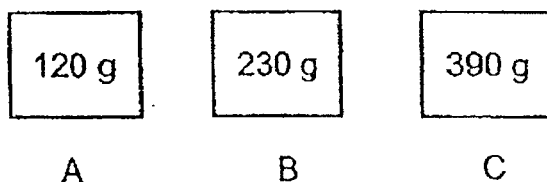
- (a) The bakery sold the least number of rainbow cakes.
- (b) 2 more strawberry cakes were sold than rainbow cakes.

Answer :

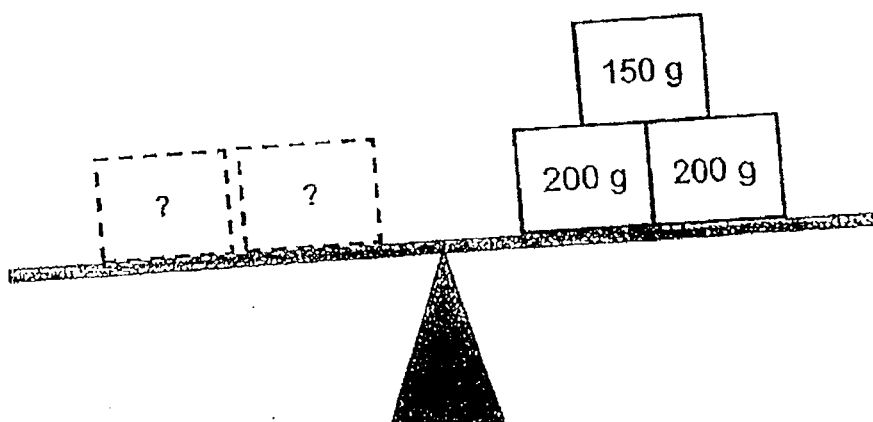
	True	False
(a)		
(b)		

SCORE

14. Ali had three boxes of different masses.



He placed two of the boxes on the balance scale as shown below. Which were the two boxes?



Answer : Box \_\_\_\_\_ and Box \_\_\_\_\_

## Section B

Do not write  
in this space

For questions 15 to 17, show your working clearly and write your answers in the spaces provided. The number of marks available is shown in brackets [ ] at the end of each question or part-question.  
(10 marks)

15. Mr Tee has a piece of ribbon 620 cm long. He cut it into 3 pieces, Ribbon A, Ribbon B and Ribbon C.  
Ribbon B is 80 cm shorter than Ribbon A and 180 cm shorter than Ribbon C.

(a) What is the length of Ribbon B?

(b) What is the length of Ribbon C?

Answer : (a) \_\_\_\_\_ [2]

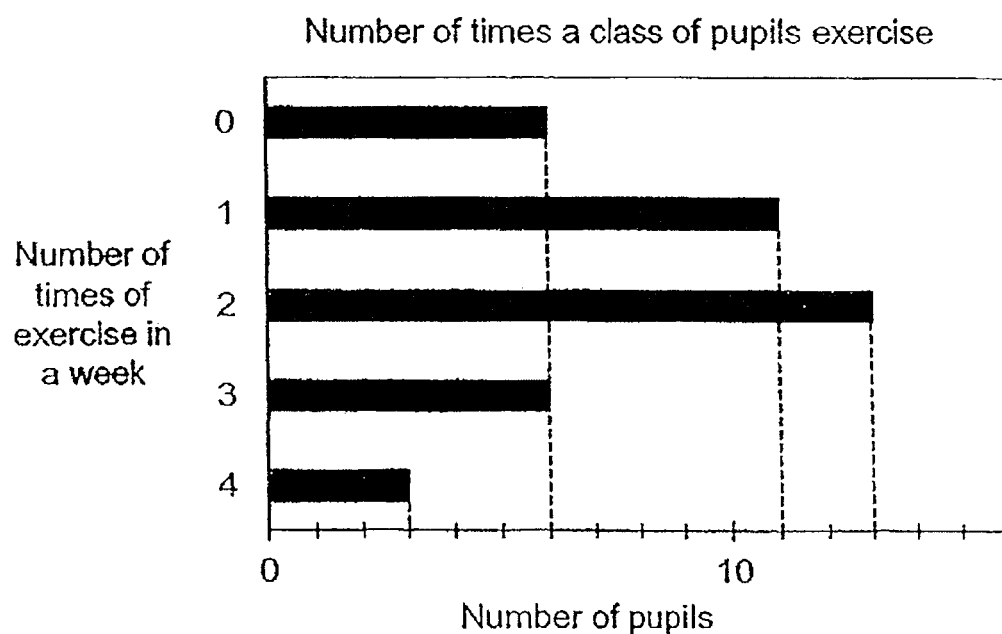
(b) \_\_\_\_\_ [1]

SCORE



16. The bar graph below shows the number of times that a class of pupils exercise in a week. Study the bar graph and answer the questions that follow.

Do not write  
in this space



- (a) How many pupils exercise fewer than 2 times in a week?
- (b) How many pupils are there in the class?

Answer : (a) \_\_\_\_\_ [2]

(b) \_\_\_\_\_ [2]

SCORE

17. Mrs Goh bought a tin of cooking oil. She used 1200 ml of the oil for cooking. Then she poured the remaining oil equally into 5 bottles, each measuring 500 ml and had 360 ml of oil left. Find the amount of oil Mrs Goh bought.

Do not write  
in this space

Answer : \_\_\_\_\_ [3]

---

**End of Paper**

Set by : Mr Wang Junxian and Mrs Peggy Leong

SCORE

EXAM PAPER 2017 (P3)

SCHOOL : PEI CHUN

SUBJECT : MATHEMATICS

TERM : CA2

- 1)  $\frac{5}{9}$       2) 890 cm      3)  $\frac{3}{4}$       4)  $\frac{5}{8}$       5)  $\frac{4}{9}$       6) 4 L 58 ml  
7) 10      8)  $\frac{4}{6}$       9) 2600 ml      10) 38 cm      11)  $\frac{5}{11}$ ,  $\frac{5}{12}$ ,  $\frac{3}{12}$   
12) 1 kg 700 g      13) a) True      b) False      14) Box C and Box B

15) 3 units  $\rightarrow 620 - 80 - 180 = 360$

Ribbon B  $\rightarrow 360 \div 3 = 120$  cm

Ribbon C  $\rightarrow 120 + 180 = 300$  cm

16) a)  $6 + 11 = 17$

b)  $3 + 6 + 13 + 11 + 6 = 39$

17)  $500 \times 5 = 2500$

$2500 + 1200 + 360 = 4060$  ml